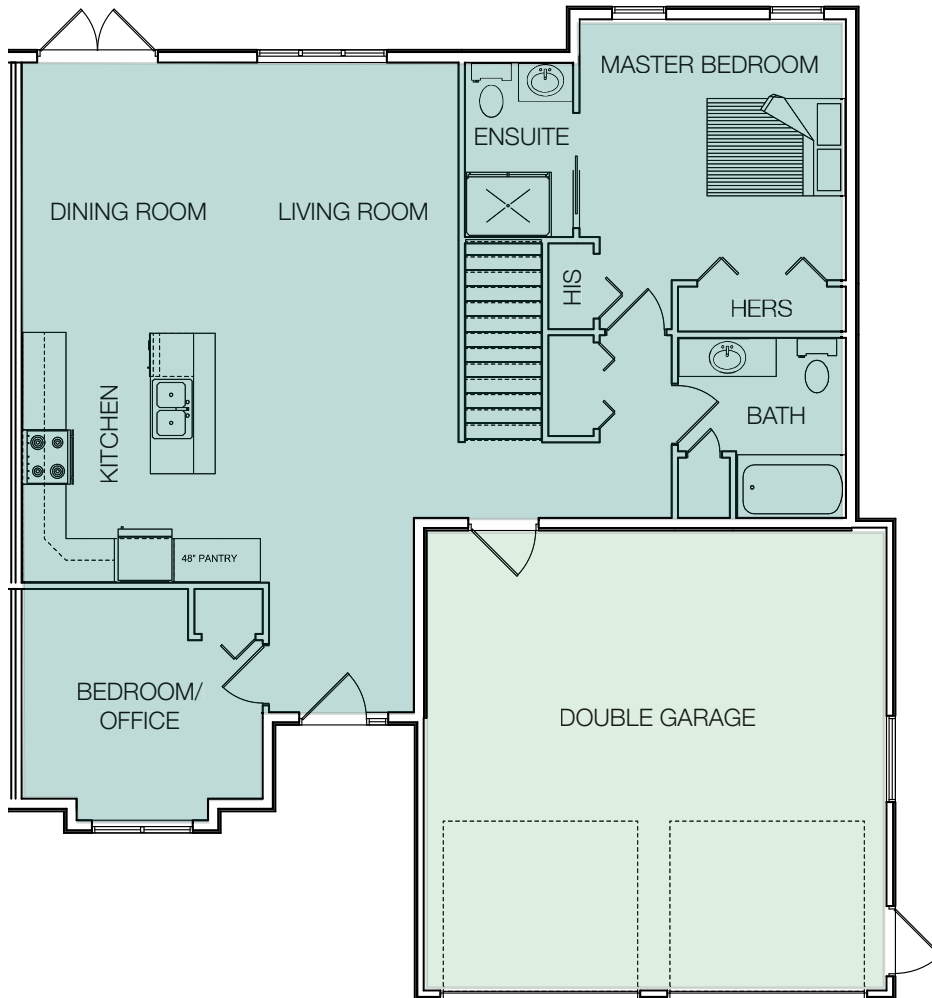




SCOTTSDALE



THE SCOTTSDALE

- . 1,111 s.f.
- . 8' ceilings.
- . Solid front door w/ side light.
- . 7' wide spacious entry hallway.
- . 12'x12' master bedroom.
- . 11'x10' guest room/office.
- . 20' x 13' dining/living room area.
- . 11'x11' kitchen.
- . 22'x22' finished garage.
- . 9'x7' designer garage doors with openers.
- . His/Hers closets in master bedroom.
- . Four piece main bathroom planned w/ linen closet.
- . 3/4 coverage of manufactured stone on front.
- . Unfinished basement plumbed for a future 3 piece bathroom.
- . Mechanical room with dropped floor.

*willowridge*